

# Highlights of April 18 & 19, 2008

## Anderson County Bus Tour

Rosell Ranch...



# Highlights of April 18 & 19, 2008 Anderson County Bus Tour



Willow Branch School



"Passinthu Clocks", owned by Myron Harsch, Garnett, Kansas.

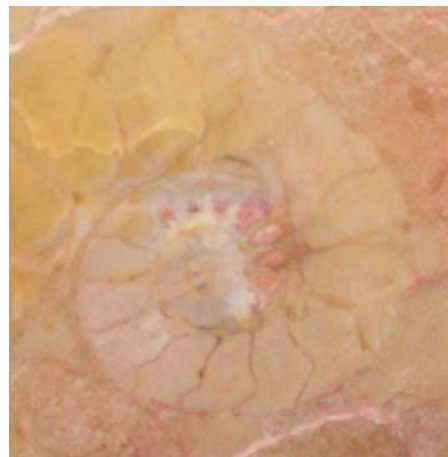
# Highlights of April 18 & 19, 2008

## Anderson County Bus Tour

Anderson County Courthouse – Courtroom & Law Library ...



Bake Sale at St. John's Hall during Greeley City Wide Garage Sale



**Do you know what these are (to the left)?**

You can find fish and shrimp at St. John's Church!

L-R: Embedded in the granite floor and main altar you can find fish and shrimp as these photos taken on the bus tour will show you.

# Highlights of April 18 & 19, 2008 Anderson County Bus Tour



Inside the bus to Spencer Bridge we go...



Karen Showalter and Susan Caron smile for the camera.



We dare YOU to "Do Dirt" in Kansas, even if by tour bus!

# Highlights of April 18 & 19, 2008 Anderson County Bus Tour



Greeley Cemetery, graves of Valentin & Mary Gerth



“Before” restoration of the 1856 Gerth Cabin ...



“After”

# Highlights of April 18 & 19, 2008

## Anderson County Bus Tour

The "truck" that Valentin Gerth used to carry his belongings on his back as he traveled to Anderson County, Kansas.



A view of the kitchen inside the Gerth Cabin.



Wagon Wheel Bridge located just south of Gerth Cabin, Greeley, Kansas.

# Highlights of April 18 & 19, 2008

## Anderson County Bus Tour

Left: Peine or Wadsworth Mound.

Lower Left: The first school district school constructed in Anderson County, Scipio Schoolhouse is now home to Rockers Photography. Right: Survey marker with elevation located on southwest corner of schoolhouse.

Bottom of page: St. Boniface Church and courtyard gardens.



# Highlights of April 18 & 19, 2008

## Anderson County Bus Tour

Views of the Carmelite Barn, a part of St. Boniface Parish, Scipio, Kansas.



Above and left: Trent McCown, Trail Manager of the Prairie Spirit Trail, talks a little trail, then walks a little of the 51-mile hiking and biking trail. The Prairie Spirit spans from Ottawa to Iola, Kansas, with much of its most scenic beauty found in Anderson County. Notice the greeter who welcomed visitors as they passed this low water bridge (above).